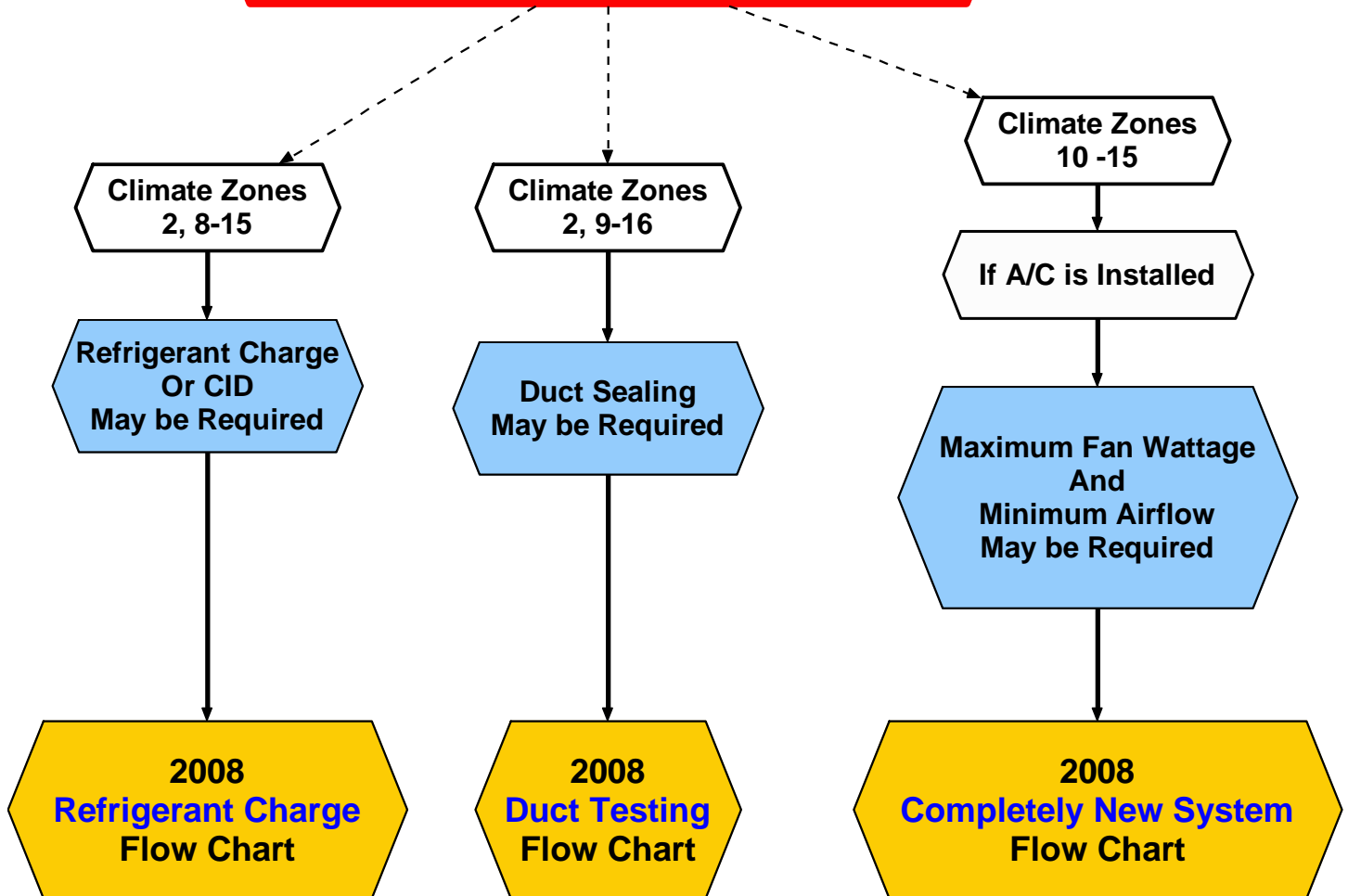


# 2008 Residential HVAC Change-Outs Flow Chart Guide

For Building Permits applied for on or after 1/01/2010

Copyright D&H Climate Control 2010

**Choose All that Apply to the Job**



These Flowcharts are provided for informational purposes only.  
D&H Climate Control makes no warranty or guarantee as to the  
accuracy of the data contained within.  
USE AT YOUR OWN RISK

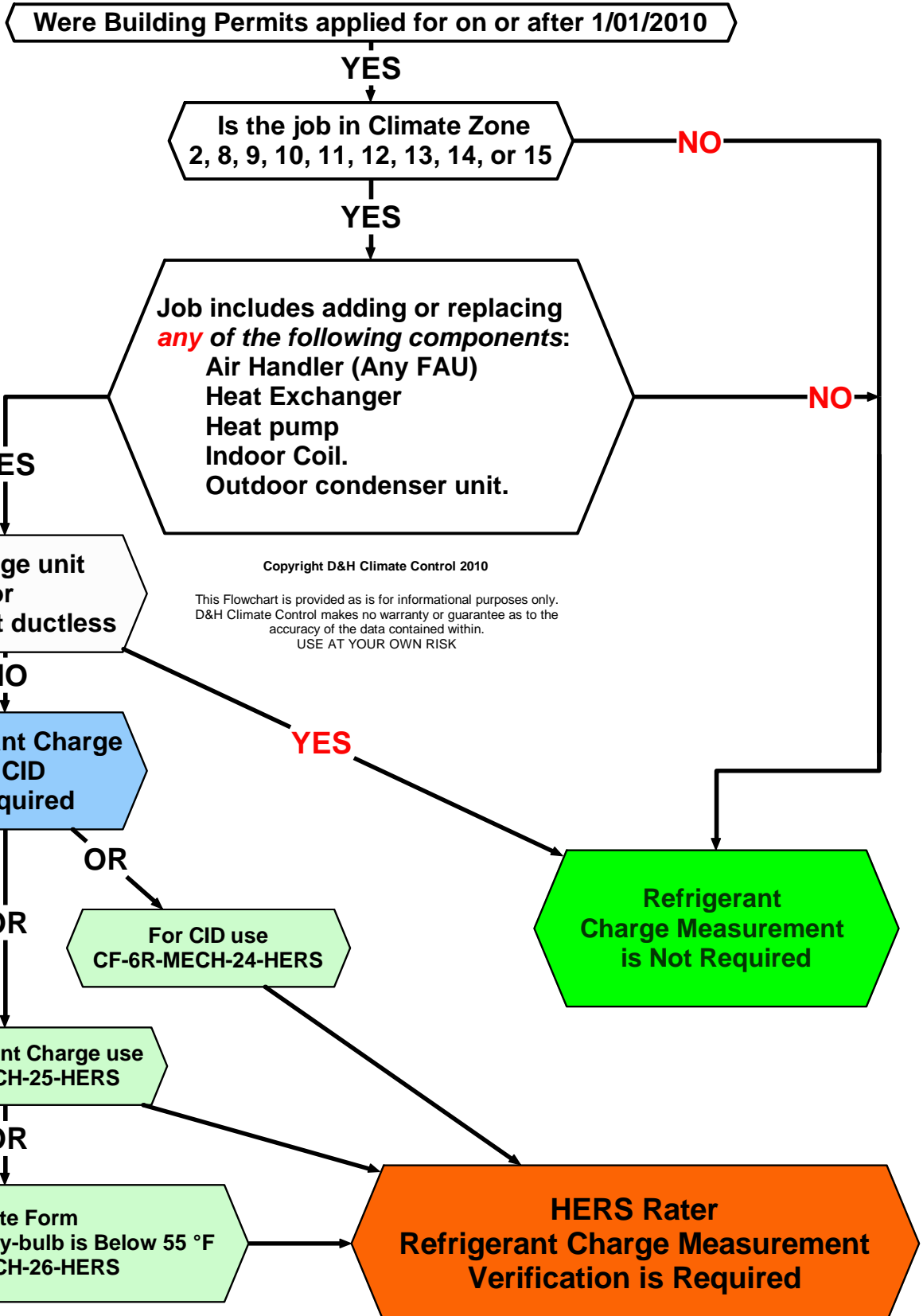
Contact your local building department about additional requirements.

Rev. 10.2.12

For more information go to <http://hersrater.net>

# 2008 Residential HVAC Change-Outs

## Refrigerant Charge

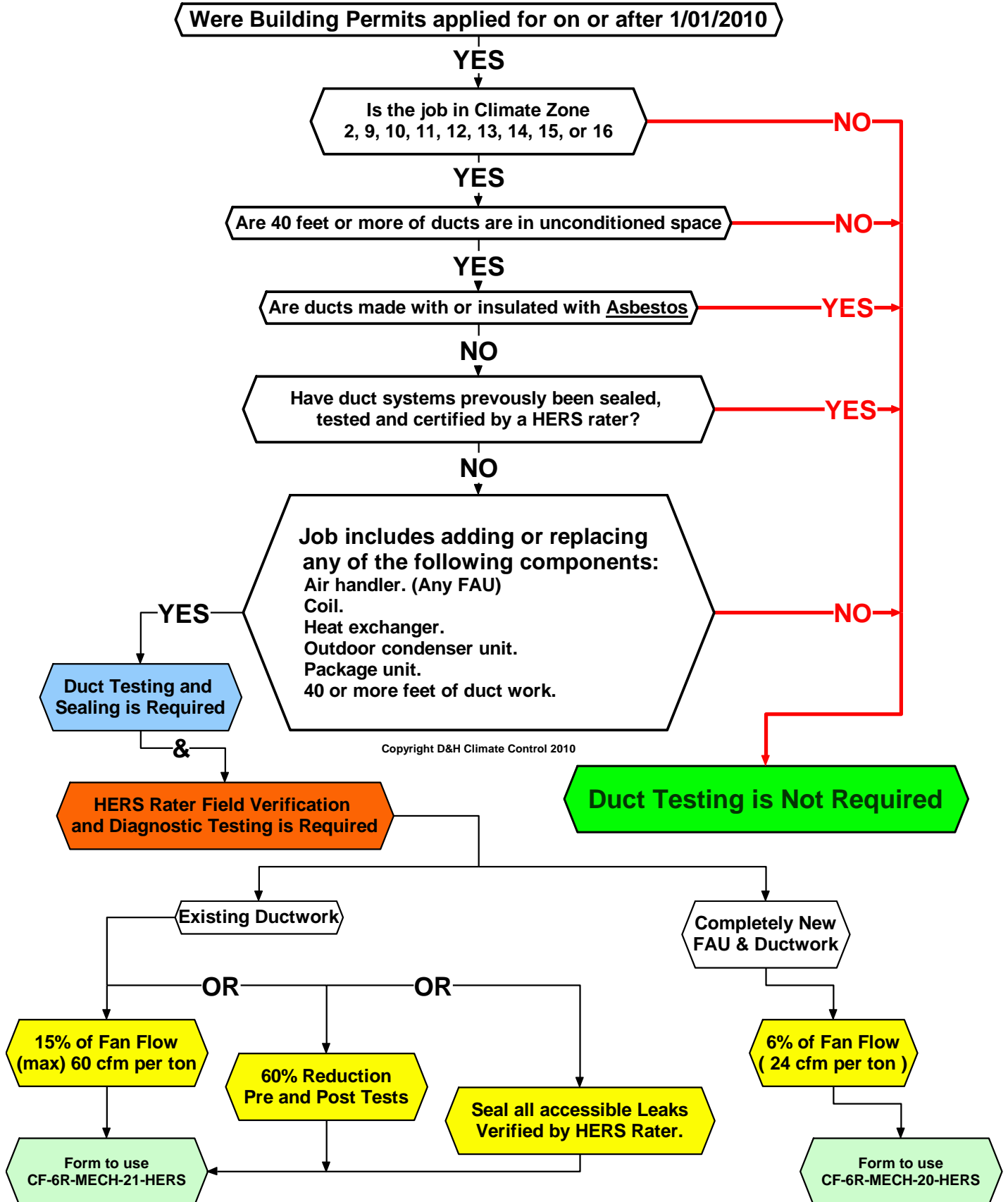


Contact your local building department about additional requirements.

For more information go to <http://hersrater.net>

# 2008 Residential HVAC Change-Outs

## Duct Testing Flow Chart



Contact your local building department about additional requirements.

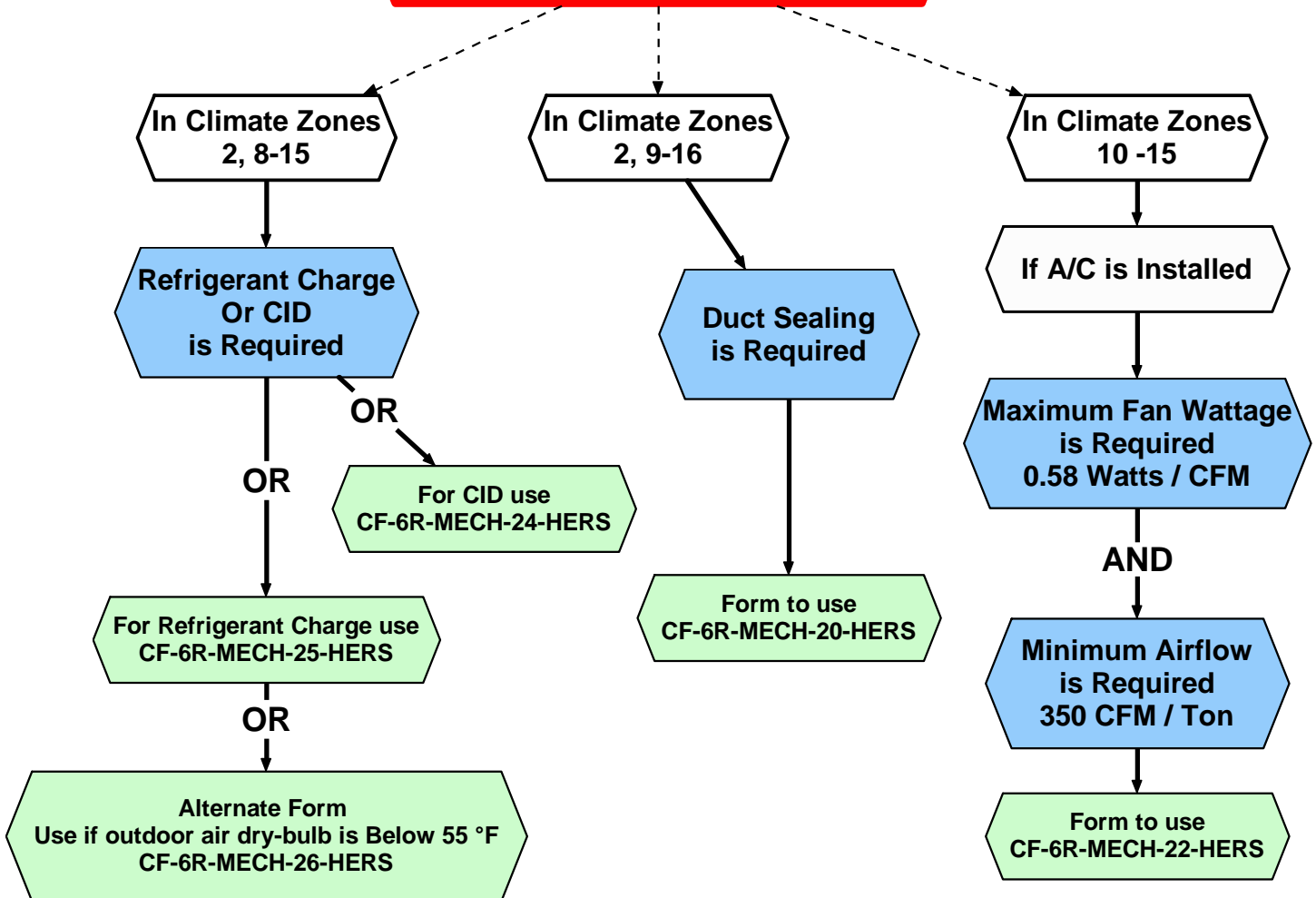
# 2008 Residential HVAC Change-Outs Completely New System

Equipment, Ducts, etc.

For Building Permits applied for on or after 1/01/2010

Copyright D&H Climate Control 2010

Choose All that Apply to the Job



**HERS Rater  
Field Verification is Required  
For All Above Tests**

Contact your local building department about additional requirements.